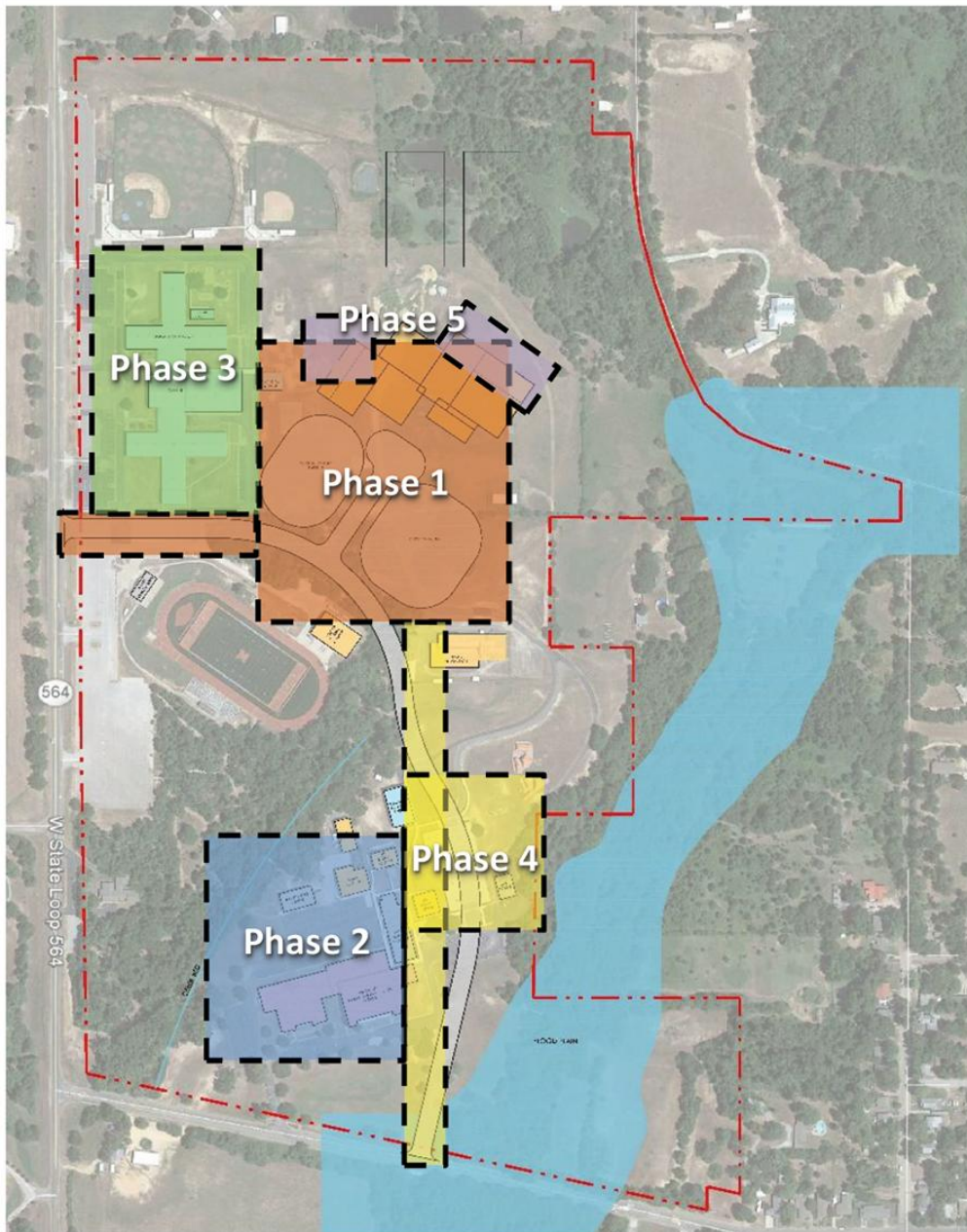


MINEOLA ISD LONG RANGE FACILITIES PLAN

The District's Long Range Facilities Plan consists of 5 phases. The proposed May 2017 bond is to implement Phase 1. The remaining phases will be added in the future.



Phase 1 – May 2017

- New High School
- New CTE Facility
- New Performing Arts Center
- Partial construction of an access road

Phase 2

- Remodel and update the existing High School to serve as a new Middle School

Phase 3

- Remodel and update existing Middle School and Primary School to serve as a new Elementary School for grades PreK - 5

Phase 4

- Remove existing Elementary School and extra buildings around the original High School
- Complete road extension out to Patten Street

Phase 5

- Complete expansion of the Performing Arts Center and the CTE Facility